



ISO 9001 : 2000
 ISO 14001 : 2004
 KSA 9001 : 2001

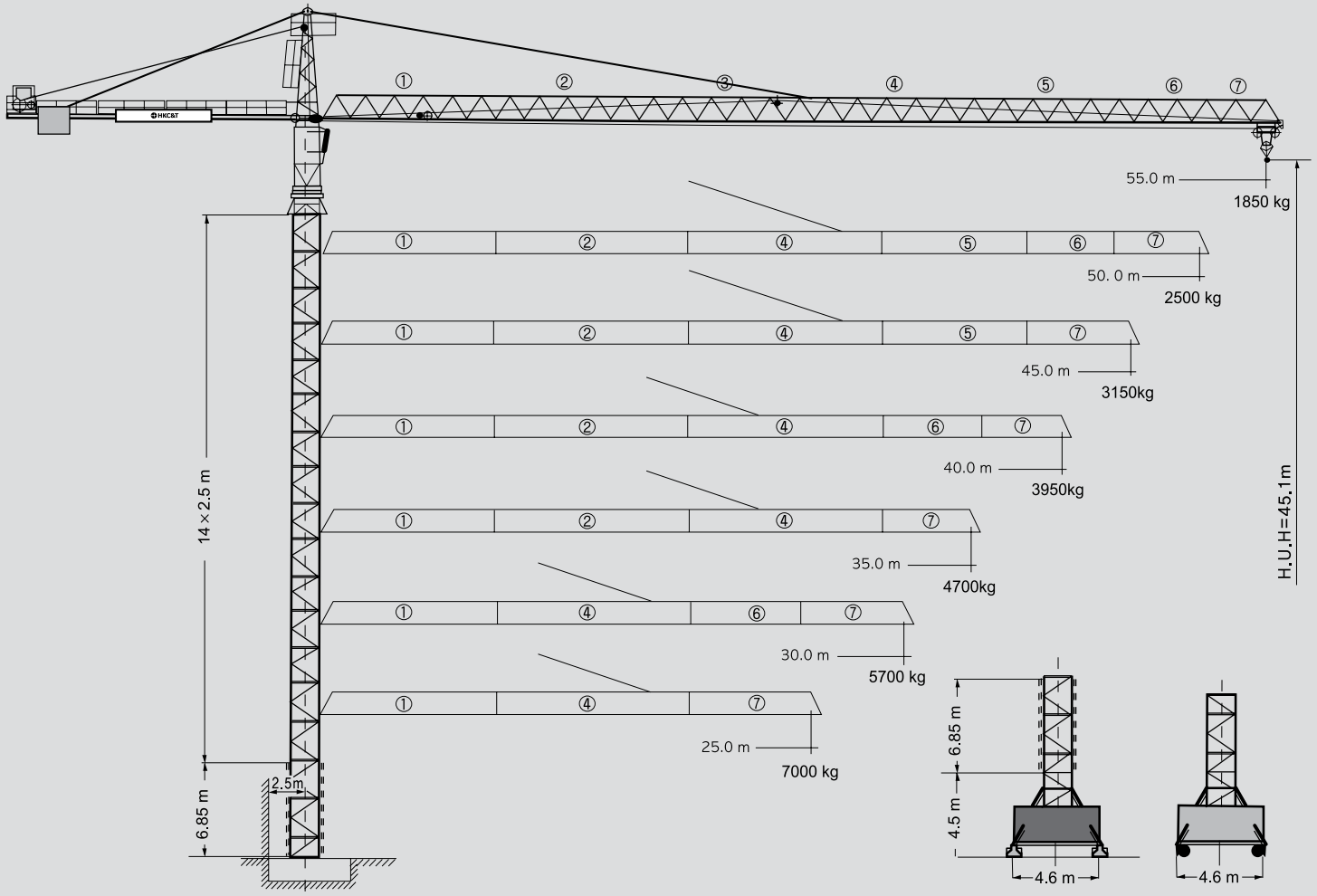


HanKook Crane & Tech

HanKook Crane & Tech

HanKook Crane & Tech

154HC TOWER CRANE



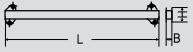






HANKOOK CRANE & TECH

154HC Packing List

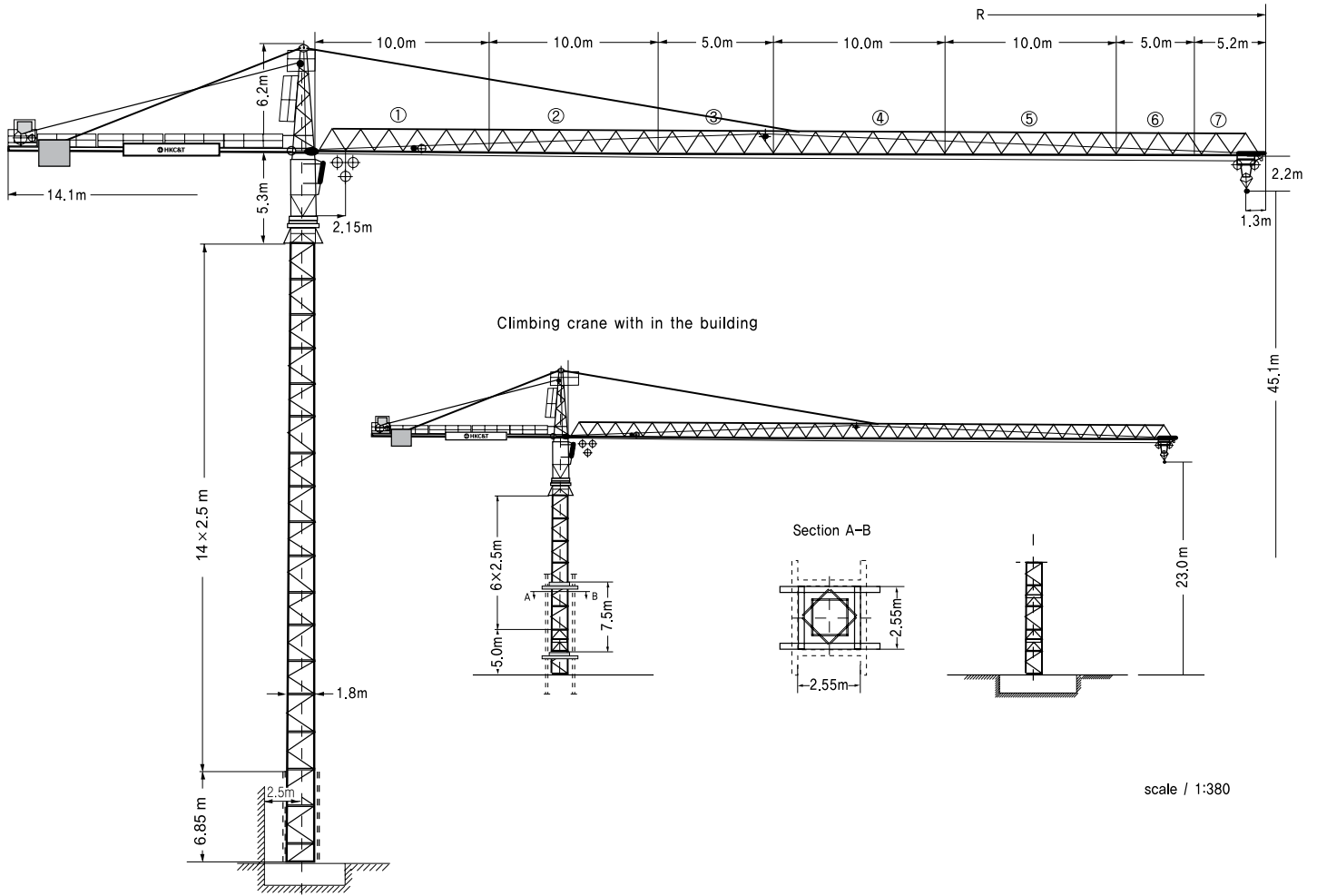
Item	Quantity	Description	This list cannot be used for the calculation of the smallest transport volume.	Length m	Width m	Height m	Unit weight kg	Total weight kg
1	1	Guide section		6,45	2,10	2,42		3485
2	14	Tower section		2,50	1,80	1,80	980	13720
3	1	Slewing platform cpl. with ball slewing ring and ring support		5,72	2,45	2,45		6800
4	1	Tower head section		5,72	1,46	1,56		1500
5	1	Hoisting gear frame with switchgear cabinet		3,66	1,92	1,78		2500
6	1	Counter-jib		11,00	2,40	0,51		2100
7	1	Jib pivoting section and guying		10,24	1,58	1,82		1900
8	2+1	Intermediate jib section		10,30	1,23	1,70 1,76		3600
9	2	Intermediate jib section		5,30	1,23	1,70	600	1200
10	1	Jib head section		5,44	1,43	1,76		505
11	1	Trolley		1,80	1,44	0,94		290
12	1	Climbing unit without hydraulic jack		5,00	1,80	1,80		3000
13	3	Climbing frame		2,50	2,33	0,43	800	2400
14	4	Climbing ladder		6,20	0,10	0,20	105	420
15	1	Bundle of ladders and platforms		3,50	1,20	1,00		800
16	1	Base Tower section		6,85	1,80	1,80		2760
17	1	Slewing platform with slewing ring support, guide and long tower section		12,35	2,45	2,42		13045
18	2	Crate with small parts and ropes		1,10	1,00	1,24	750	1500
19	1	Hydraulic unit supporting and climbing bracket		2,87	2,12	1,06		1000

Undercarriage

20	2	Driven bogie with equalizing beam		1,38	0,88	0,87	980	1320
21	2	Non-driven bogie with equalizing beam		1,17	0,60	0,87	780	880
22	1	Support arm I		7,12	0,78	0,65		1850
23	2	Support arm II		3,45	0,56	0,55	408	1660
24	4	Cross arm		4,02	0,35	0,12	95	380
25	4	Support strut		3,78	0,15	0,22	200	800
26	1	Undercarriage tower section		3,50	2,06	2,06		1320



Head Office : 91-10 Daewon-dong, Changwon, Gyeongnam, Korea TEL,+82-55-238-0009 FAX,+82-55-238-0006
 Seoul Office : 197-28, 13F E&C Venture Dream Tower VI, Guro-dong Guro-Gu, Seoul, Korea TEL,+82-2-830-0040 FAX,+82-2-830-0065
 Viet Nam : Road 25B, Nhon Trach 2 Industrial Park, Nhon Trach District, Dong Nai Province TEL,+84-61-356-9500 FAX,+84-61-356-9501
 Gulf Branch : P.O.Box 18379, JAFZ Dubai, U,A,E TEL,+971-4-8815727 FAX,+971-4-8815728
 Qatar Office : P.O.Box 55654, Doha, Qatar TEL,+974-466-1326 FAX,+974-465-0049



Hoisting height

Number of tower sections	Hoisting height	
	stationary type m	Travelling type m
0	10,1	14,4
1	12,6	16,9
2	15,1	19,4
3	17,6	21,9
4	20,1	24,4
5	22,6	26,9
6	25,1	29,4
7	27,6	31,9
8	30,1	34,4
9	32,6	36,9
10	35,1	39,4
11	37,6	41,9
12	40,1	44,4
13*	42,6	46,9
14*	45,1	49,4

※Lower guide section after erection, / Further hoist heights on request,

Technical data

Data for rail-going crane

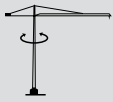
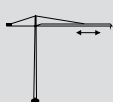
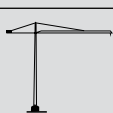
Wheel guage	4,6 m
Track gauge	4,6 m

Interior curve radius	8,5 m
Dead weight (max. hoisting Height + radius)	51870 kg

Radius and capacity

Lenght of jib (Slewing radius)	MAX. Capacity	Radius and capacity																		
		18,0	19,0	20,0	21,0	22,0	23,0	25,0	27,0	30,0	32,0	35,0	37,0	40,0	42,0	45,0	47,0	50,0	52,0	55,0
m	m/kg																			
55,0 (R=56,3)	2,15-17,0 8000	7030	6620	6250	5920	5620	5340	4860	4450	3940	3650	3280	3070	2790	2630	2410	2280	2100	1990	1850
50,0 (R=51,3)	2,15-18,3 8000	8000	7680	7260	6880	6535	6220	5670	5200	4610	4280	3850	3610	3290	3100	2850	2700	2500		
45,0 (R=46,3)	2,15-19,9 8000	8000	8000	7940	7530	7150	6810	6210	5700	5060	4700	4240	3970	3630	3420	3150				
40,0 (R=41,3)	2,15-21,4 8000	8000	8000	8000	8000	7740	7370	6730	6180	5490	5110	4610	4320	3950						
35,0 (R=36,3)	2,15-21,7 8000	8000	8000	8000	8000	7890	7510	6850	6300	5600	5200	4700								
30,0 (R=31,3)	2,15-22,1 8000	8000	8000	8000	8000	8000	7650	6980	6410	5700										
25,0 (R=26,3)	2,15-22,1 8000	8000	8000	8000	8000	8000	7670	7000												

Speeds

	0,9 sl./min	2× 6,3kW
	10,0 / 34,0 / 67,0 m/min	5,0kW
	25,0m/min	2× 3,0kW

Hoist gear	Gear	kg	m/min
30 kW, WIW 240 RX036 Elmag Hoisting height 110m(5 layers)	1	8000	2,92
		8000	12,70
		4900	25,00
	2	3200	7,40
		3200	32,25
		1800	63,35

- ※Total motor output with 30kW—hoist gear 47,6(53,6)kW
- ※This specification is subject to change without prior notice for high efficiency.
- ※In case of generator : Min. 150kW above
- ※This Tower Crane model for exportation only and technical data to be follows the standard of manufacturer.

