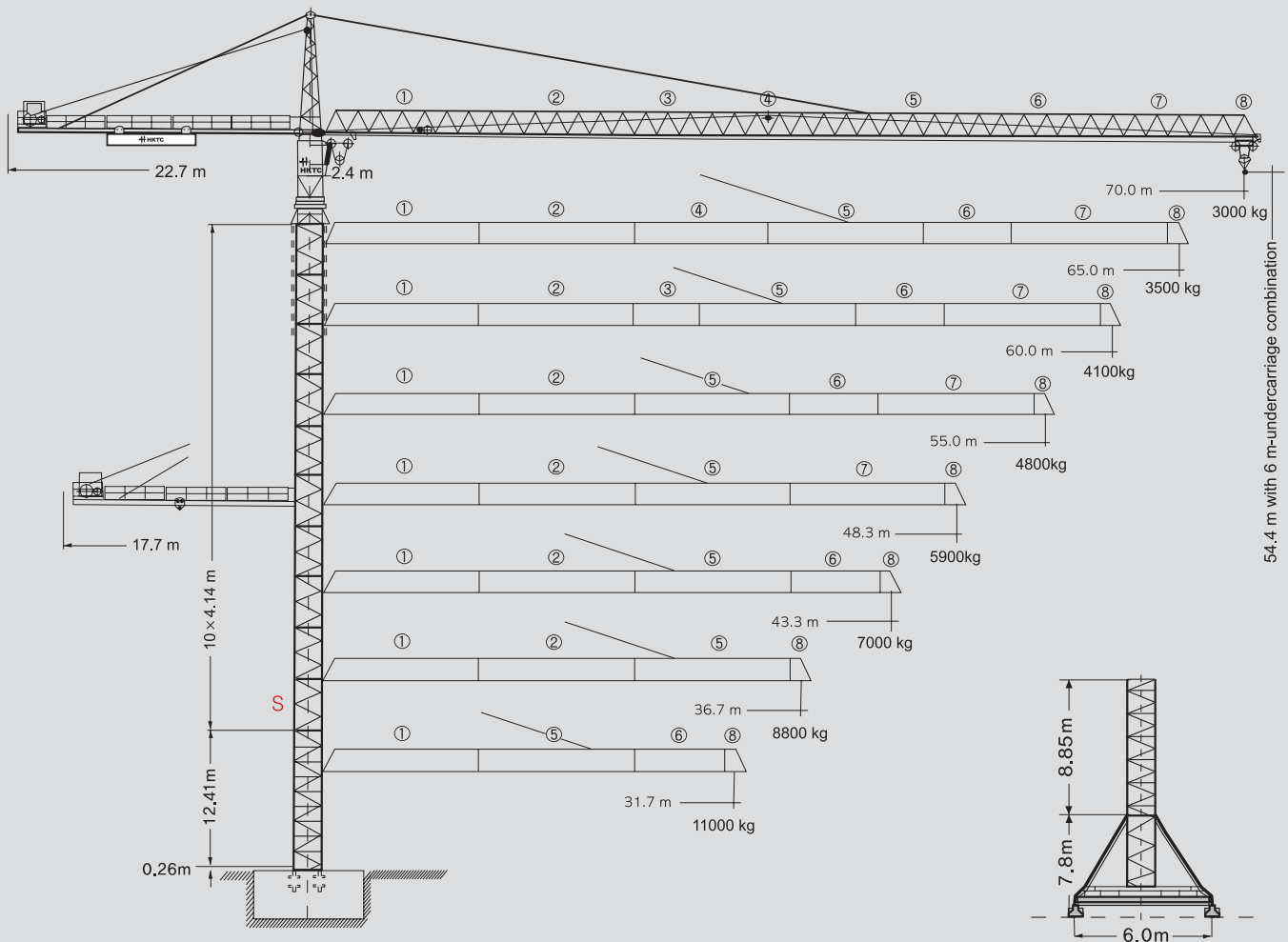




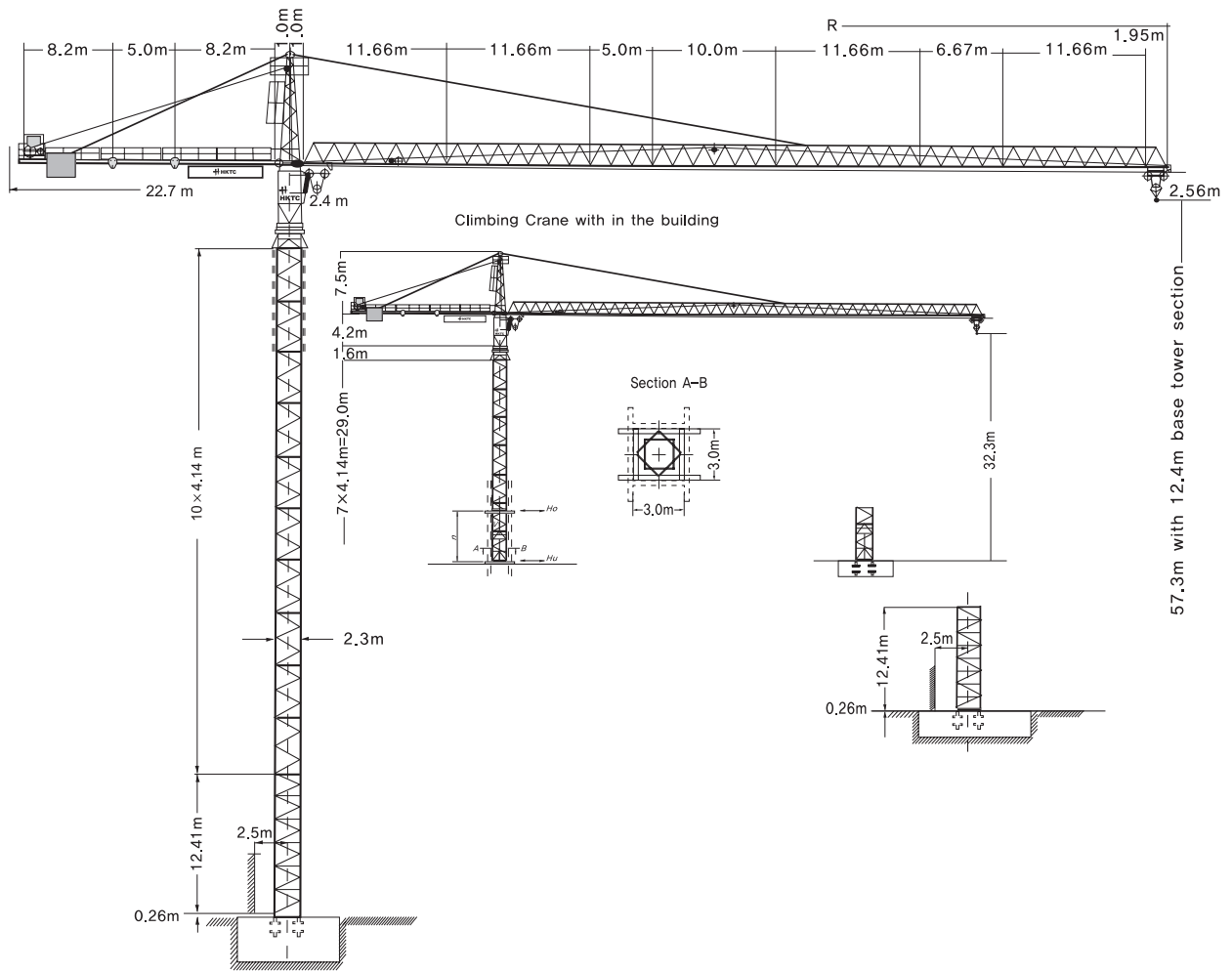
ISO 9001 : 2000
 ISO 14001 : 2004
 KSA 9001 : 2001



290HC TOWER CRANE



HANKOOK TOWER CRANE



Hoisting height

Number of tower section	Stationary type	Travelling type
	m	m
0	12.4	17.1
1	16.6	21.2
2	20.7	25.4
3	24.8	29.6
4	29.0	33.7
5	33.1	37.8
6	37.3	41.9
7	41.4	46.1
8	45.5	50.2
9*	49.7	54.4
10*	-	-

※Lower guide section after erection, / Further hoist height on request

Technical data

Data for rail-going crane

Wheel gauge	6.0m order 8.0m
Track gauge	6.0m order 8.0m
Interior curve radius(6m-undercarriage)	12.5m



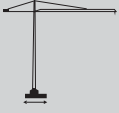
Interior curve radius(8m-undercarriage)	12.5m
Dead weight(6m-undercarriage)	85,000kg
Dead weight(8m-undercarriage)	92,000kg

※Max. hoisting height + max. radius

Radius and capacity

Length of jib (Slewing radius) m	MAX Capacity m/kg	Radius and capacity																			
		25.0	28.0	31.7	34.0	36.7	38.0	40.0	42.0	43.3	45.0	48.3	51.0	53.0	55.0	57.0	60.0	62.0	65.0	67.0	70.0
70.0(R=71.36)	2.2-19.1 12000	10000	9277	8050	7420	6785	6510	6130	5780	5570	5310	4870	4550	4330	4130	3950	3690	3540	3320	3190	3000
65.0(R=66.36)	2.2-22.4 12000	10000	9700	8420	7770	7110	6820	6420	6060	5840	5575	5110	4780	4560	4350	4150	3890	3730	3500		
60.0(R=61.36)	2.2-24.1 12000	11352	10160	8820	8140	7450	7160	6740	6360	6130	5860	5380	5030	4800	4580	4380	4100				
55.0(R=56.36)	2.2-25.0 12000	12000	10595	9210	8500	7790	7480	7045	6650	6420	6130	5630	5270	5030	4800						
48.33(R=49.7)	2.2-26.0 12000	12000	11070	9625	8890	8145	7820	7370	6960	6720	6420	5900									
43.33(R=44.7)	2.2-27.0 12000	12000	11500	10010	9250	8480	8145	7680	7250	7000											
36.67(R=38.0)	2.2-27.8 12000	12000	11930	10390	9600	8800															
31.67(R=33.0)	2.2-29.3 12000	12000	12000	11000																	

Speeds

	0.9 sl./min	2X6.3 kW
	8.0/16.0/50.0/95.0 m/min	5.5 kW
	25.0m/min with 6m-undercarriage	2X7.5 kW

※Total motor output

94.1 kW

Hoist gear	Gear	kg	m/min
61.0kW, Elmag, WSB	1	12000	1.4/14.0
	2	5000	5.1/51.0
	3	2100	10.1/101.0



290HC Packing List

Item	Quantity	Description	This list cannot be used for the calculation of the smallest transport volume.	Length m	Width m	Height m	Unit weight kg	Total weight kg
1	2	Rail bogie with drive		1,63 ()*(1,46)	0,92 (0,84)	0,95 (0,87)	1450 (1080)	2900 (2160)
2	2	Rail bogie without drive		1,37 (1,15)	0,62 (0,60)	0,95 (0,87)	1255 (800)	2510 (1600)
3	1	Support arm long		9,10 (11,95)	0,80 (0,82)	0,80 (0,80)		1650 (2200)
4	2	Support arm short		4,45 (5,85)	0,77 (0,65)	0,77 (0,77)	800 (1035)	1600 (2070)
5	2+2 2+2	Border support		5,46-5,40 (7,52-7,46)	0,11-0,18 (0,10-0,17)	0,16-0,38 (0,10-0,38)	175-525 (366-912)	1400 (2556)
6	4	Support strut		4,14 (6,55)	0,18 (0,22)	0,25 (0,25)	320 (600)	1320 (2400)
7	1	Guide section cpl		8,39	2,80	2,50		4070
8	1	Undercarriage tower section		3,73 (6,70)	2,62 (2,53)	2,62 (2,53)		2550 (3800)
9	10	Tower section		4,14	2,30	2,30	2260	20430
10	1	Slewing platform cpl, with ball slewing ring and ring support		6,24	2,74	2,57		9300
11	1	Tower head section		8,88	1,64	1,80		2560
12	1	Counter-jib head		9,10	2,42	0,92		3260
13	1	Counter-jib heel section and guying		8,44	1,77	0,92		2020
14	1	Intermediate counter-jib section		5,22	1,76	0,92		2580
15	1	Jib heel section and guying		12,02	1,84	1,96		2980
16	3	Intermediate jib section		12,02	1,63	1,87	2165 2070 1200	5435
17	2	Intermediate jib section		5,36	1,63	1,87	925 1015	1940
18	1	Intermediate jib section		10,36	1,63	1,87		1864
19	1	Jib head		2,21	1,84	1,14		330
20	1	Trolley		1,89	1,83	1,20		335
21	1	Base tower section		8,85	2,30	2,30		4380 (7550)
22	1	Platforms		5,00	1,50	2,00		2300
23	1	Hydraulic system, supporting and climbing cross members		2,10	1,25	1,00		800
24	2	Long tower section		12,42	2,3	2,3		5520
25	1	Hoist gear frame		2,56	2,28	1,64		3500
26	1	Crate with small parts, ropes and foundation angle irons		1,1	1,0	1,24		3000



Head Office : 91-10 Daewon-dong, Changwon, Gyeongnam, Korea TEL,+82-55-238-0009 FAX,+82-55-238-0006
 Seoul Office : 197-28, 13F E&C Venture Dream Tower VI, Guro-dong Guro-Gu, Seoul, Korea TEL,+82-2-830-0040 FAX,+82-2-830-0065
 Viet Nam : 150 Nguyen Xi Str, W,26, Binh Thanh Dist, Ho Chi Minh City, Viet Nam TEL,+84-8-258-8163~4 FAX,+84-8-899-3231
 Gulf Branch : P.O.Box 18379, JAFZ Dubai, U,A,E TEL,+971-4-8815727 FAX,+971-4-8815728