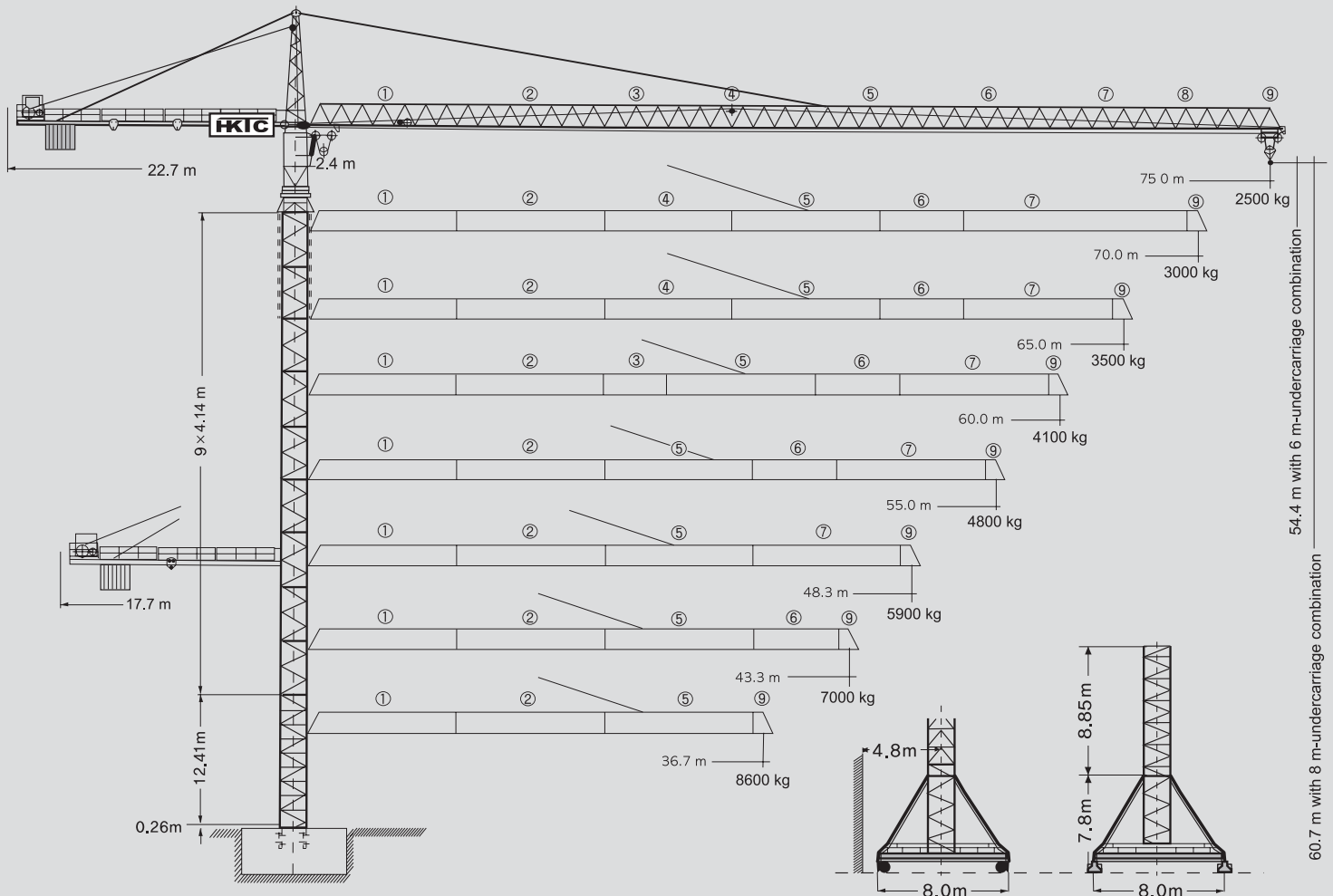


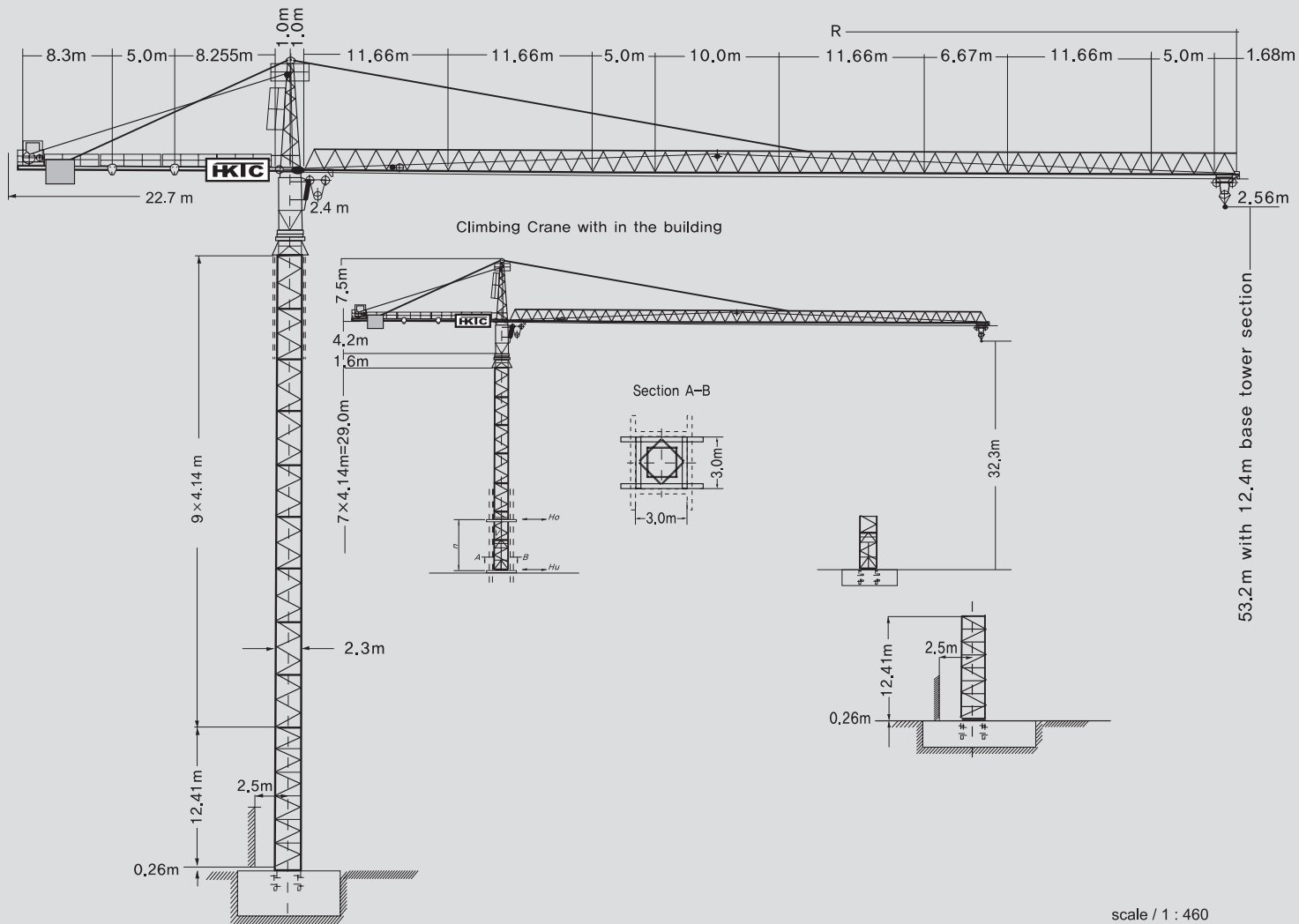
Hankook Tower Crane
Hankook Tower Crane
Hankook Tower Crane
Hankook Tower Crane

290HC 16 TOWER CRANE

with 6m-and 8m-undercarriage combination



HANKOOK TOWER CRANE













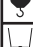


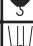

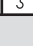
Hoisting height

Number of tower sections	Data for type with 6m-undercarriage/8,85m base tower		Data for type with 8m-undercarriage/12,4m base tower	
	Hoisting height		Hoisting height	
	stationary type	Travelling type	stationary type	Travelling type
	m	m	m	m
0	12,4	17,1	16,0	23,5
1	16,6	21,2	20,1	27,7
2	20,7	25,4	24,3	31,8
3	24,8	29,6	28,4	35,9
4	29,0	33,7	32,5	40,0
5	33,1	37,8	36,7	44,1
6	37,3	41,9	40,8	48,2
7	41,4	46,1	45,0	52,4
8	45,5	50,2	49,1	56,5
9*	49,7	54,4	53,2	60,7

*Lower guide section after erection. / Further hoist heights on request.

290HC 16

Radius and capacity



Length of jib (Slewing radius) m	MAX. Capacity m/kg	Radius and capacity																					
		20	25	28	31,7	34	36,7	38	40	42	43,3	45	48,3	51	53	55	57	60	62	65	67	70	75
75.0 (R = 76,36)	 2,2-16,0 12000	10000	9280	8130	7020	6480	5940	5670	5320	5020	4840	4610	4220	3930	3730	3360	3390	3160	3020	2870	2710	2550	2300
	 2,2-30,5 8000	8000	8000	8000	7140	6670	6120	5650	5510	5210	5030	4690	4410	4130	3950	3550	3580	3300	3220	3070	2920	2750	2500
70.0 (R = 71,36)	 2,2-16,0 12000	10000	10000	9110	7870	7240	6600	6330	5940	5590	5380	5120	4680	4360	4110	3940	3750	3400	3340	3120	2990	2800	
	 2,2-31,7 8000	8000	8000	8000	8000	7420	6790	6510	6130	5780	5570	5310	4870	4550	4330	4130	3950	3690	3540	3320	3190	3000	
65.0 (R = 66,36)	 2,2-17,0 12000	10000	10000	9530	8240	7590	6920	6640	6230	5870	5650	5380	4920	4590	4360	4150	3960	3690	3530	3300			
	 2,2-32,5 8000	8000	8000	8000	8000	7770	7110	6820	6420	6060	5840	5575	5110	4780	4560	4350	4150	3890	3730	3500			
60.0 (R = 61,36)	 2,2-18,0 16000	16000	11360	9980	8640	7960	7270	6970	6550	6170	5940	5660	5180	4830	4600	4380	4180	3900					
	 2,2-34,0 8000	8000	8000	8000	8000	8000	7450	7160	6740	6360	6130	5860	5380	5030	4800	4580	4380	4100					
55.0 (R = 56,36)	 2,2-19,0 16000	16000	12070	10610	9200	8480	7750	7430	6990	6590	6350	6060	5550	5180	4930	4700							
	 2,2-35,0 8000	8000	8000	8000	8000	8000	7790	7480	7050	6650	6420	6130	5630	5270	5030	4800							
48,33 (R = 49,7)	 2,2-20,0 16000	16000	12570	11050	9590	8840	8080	7760	7300	6880	6630	6330	5800										
	 2,2-36,7 8000	8000	8000	8000	8000	8000	8000	7820	7370	6960	6720	6420	5900										
43,33 (R = 44,7)	 2,2-20,0 16000	16000	13030	11470	9960	9180	8400	8060	7590	7160	6900												
	 2,2-38,0 8000	8000	8000	8000	8000	8000	8000	8000	7680	7250	7000												
36,67 (R = 38,0)	 2,2-21,0 16000	16000	13330	11730	10190	9400	8600																
	 2,2-36,7 8000	8000	8000	8000	8000	8000	8000																

Speeds

Slewing	0,7 sl./min	2× 6,3kW
Trolley	0 - 110 m/min	7,5kW
Travelling	25,0 m/min with 8 m - undercarriage 25,0 m/min with 6 m - undercarriage	2× 7,5kW

※Total motor output

58(73)kw

Hoist gear	Gear	kg	m/min
37,5 kw, WIW 240 RX054 Elmag, WSB Hoisting height 150m (5 layers)		1 8000	1,4/20,0
		2 3200	3,3/50,0
		3 1400	6,7/100,0
		1 16000	0,7/10,0
		2 6400	1,6/25,0
		3 2800	3,3/50

※Total power requirement (with a simultaneity factor of 0,8)

Technical data

290HC 16 Packing List

Item	Quantity	Description	This list cannot be used for the calculation of the smallest transport volume.	Length m	Width m	Height m	Unit weight kg	Total weight kg
1	2	Rail bogie with drive		1.63 (*) (1.46)	0.92 (0.84)	0.95 (0.87)	1450 (1080)	2900 (2160)
2	2	Rail bogie without drive		1.37 (1.15)	0.62 (0.60)	0.95 (0.87)	1255 (800)	2510 (1600)
3	1	Support arm long		9.10 (11.95)	0.80 (0.82)	0.80 (0.80)		1650 (2200)
4	2	Support arm short		4.45 (5.85)	0.77 (0.65)	0.77 (0.77)	800 (1035)	1600 (2070)
5	2+2 2+2	Border support		5.46-5.40 (7.52-7.46)	0.11-0.18 0.10-0.17	0.16-0.38 0.10-0.38	175-525 366-912	1400 2556)
6	4	Support strut		4.14 (6.55)	0.18 (0.22)	0.25 (0.25)	320 (600)	1320 (2400)
7	1	Guide section cpl		8.39	2.80	2.50		4070
8	1	Undercarriage tower section		3.73 (6.70)	2.62 (2.53)	2.62 (2.53)		2550 (3800)
9	9	Tower section		4.14	2.30	2.30	2260	20340
10	1	Slewing platform cpl. with ball slewing ring and ring support		6.24	2.74	2.57		9080
11	1	Tower head section		8.88	1.64	1.80		2560
12	1	Counter-jib head		8.06	2.42	0.92		2580
13	1	Counter-jib heel section and guying		8.44	1.77	0.92		2020
14	1	Intermediate counter-jib section		5.22	1.76	0.92		2580
15	1	Jib heel section and guying		12.02	1.84	1.96		2980
16	3	Intermediate jib section		12.02	1.63	1.87	2165 2070 1200	5435
17	3	Intermediate jib section		5.36 7.03	1.63	1.87	925 1015	2865
18	1	Intermediate jib section		10.36	1.63	1.87		1864
19	1	Jib head		2.21	1.84	1.14		330
20	1	Trolley		1.89	1.83	1.20		335
21	1	Base tower section		8.85 (12.42)	2.30 (2.30)	2.30 (2.30)		4380 (7550)
22	1	Platforms		5.00	1.50	2.00		2300
23	1	Hydraulic system, supporting and climbing cross members		2.10	1.25	1.00		800
24	1	Base tower section		12.42	2.3	2.3		5520
25	1	Hoist gear frame		4.12	2.40	1.66		4790
26	1	Crate with small parts, ropes and foundation angle irons		1.1	1.0	1.24		3000