

## Components



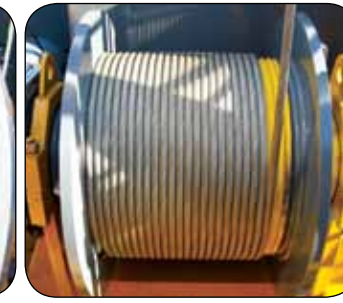
A-FRAME



SPRING STOPPER



HOISTING DRUM



LUFFING DRUM

COUNT JIN & BALLAST BLOCK



BOOM SECTION



HOISTING & LUFFING GEAR



## HKL1855 LUFFING CRANE

### HKL1855 Packing List

Item	Dimension(L X W X H)	Quantity	Length(m)	Width(m)	Height(m)	Unit Weight	Total Weight
#1 Boom		1	10,48	1,73	1,85	2250	2250
#2 Boom		1	9,26	1,62	1,88	1230	1230
#3 Boom		1	5,3	1,62	1,88	750	750
#4, #5 Boom		2	10,47	1,62	1,72	1280	2560
#6 Boom		1	11,3	1,62	2,75	1370	1370
Luffing, Hoist ass'y		1	4,06	2,44	1,68	7700	7700
Counter jib		1	8,84	2,3	1,35	7070	7070
Turn Table ass'y		1	2,74	2,62	2,85	7630	7630
A-Frame		1	12,85	1,79	1,1	4270	4270
Cabin		1	4,10	2,08	2,45	970	970
Spring Stopper		2	2,88	0,29	0,98	260	520
Mobile Tackle		1	1,04	1,04	0,54	385	385
A-Frame Ladder		1	12,05	0,87	0,72	240	240
S / Tower section		7	4,14	2,3	2,3	2600	18200
Base tower section		1	12,41	2,3	2,3	7950	7950
Ballast block	"A" type	1	2,55	0,97	1,3	5000	5000
	"B" Type	4	3,6	0,5	1,3	5000	20000
Guide section cpl		1	8,39	2,80	2,50	4070	4070
Platforms		1	5,00	1,50	2,00	2300	2300
Hydraulic system, supporting and climbing part		1	2,10	1,25	1,00	800	800
Others	Crate with small parts, foundation anchor, pendant wire roe	1	1,7	1,0	1,5	3000	3000



Head Office : 91-10 Daewon-dong, Changwon, Gyeongnam, Korea TEL:+82-55-238-0009 FAX:+82-55-238-0006  
 Seoul Office : 197-28, 13F E&C Venture Dream Tower VI, Guro-dong Guro-Gu, Seoul, Korea TEL:+82-2-830-0040 FAX:+82-2-830-0065  
 Viet Nam : Road 25B, Nhon Trach 2 Industrial Park, Nhon Trach District, Dong Nai Province TEL:+84-61-356-9500 FAX:+84-61-356-9501  
 Gulf Branch : P.O.Box 18379, JAFZ Dubai, U.A.E TEL:+971-4-8815727 FAX:+971-4-8815728  
 Qatar Office : P.O.Box 55654, Doha, Qatar TEL:+974-466-1326 FAX:+974-466-0049

www.hkcnt.com



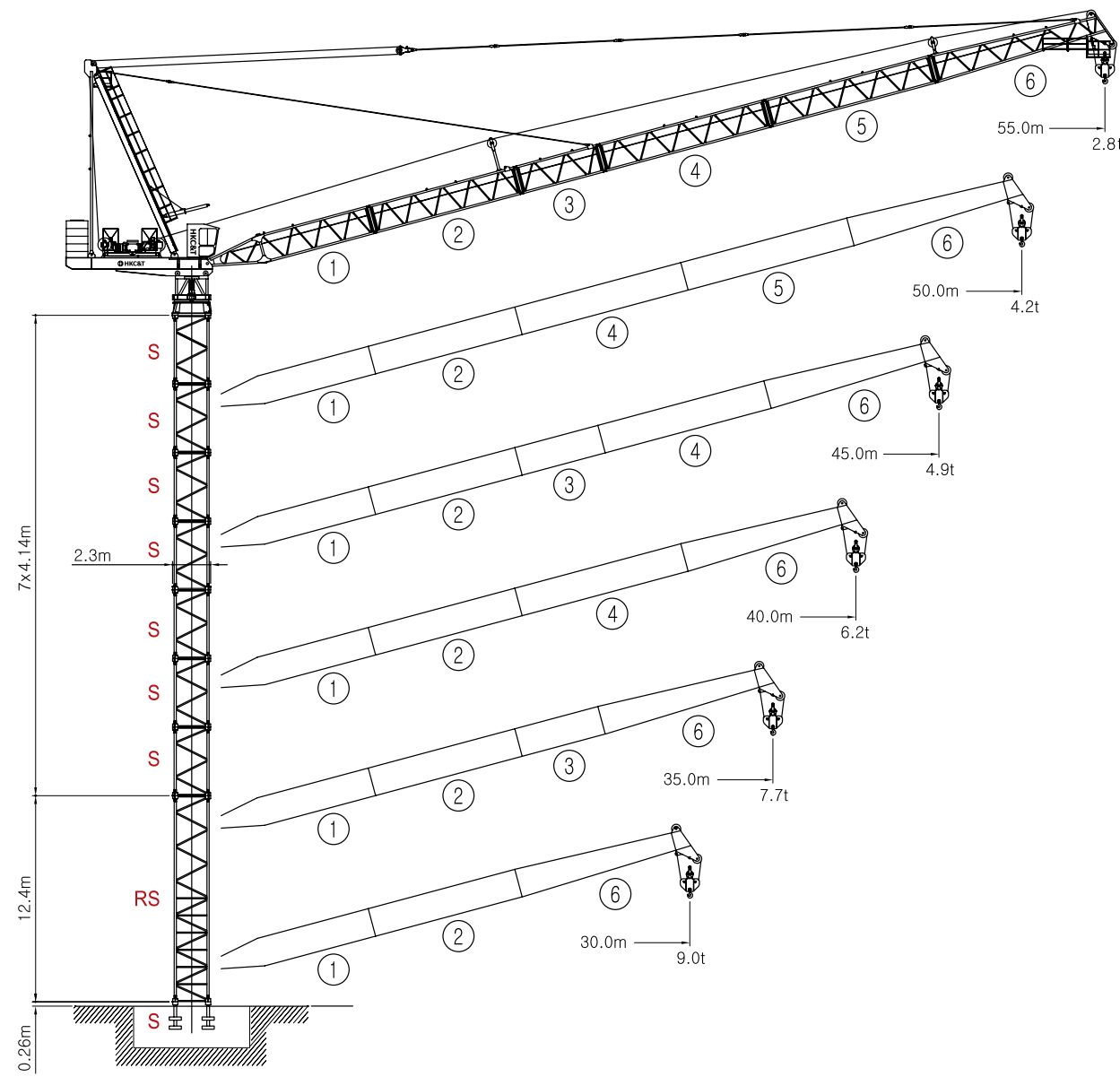
# 18ton / 55m LUFFING CRANE HKL1855



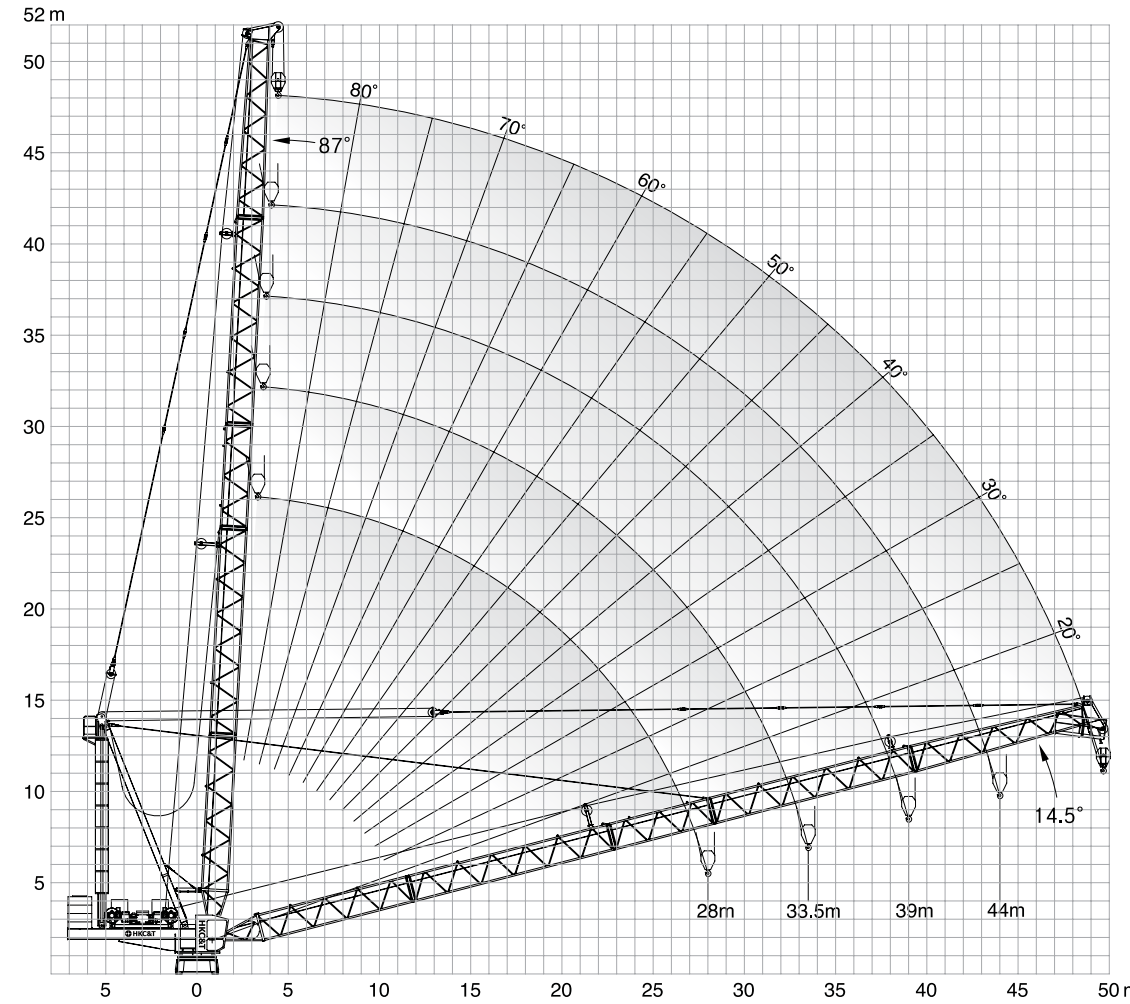
# HANKOOK CRANE & TECH



# 18TON LUFFING CRANE HKL 1855



## Radius and Hoisting height



## Radius and capacity

Length of jib	MAX Capacity	Radius and capacity															
		Radius(m)															
Radius(m)	m/kg	18	20	23	25	28	30	33	35	38	40	43	45	48	50	53	55
55m	5,4-27,2 9000	9000	9000	9000	9000	9000	8240	7060	6390	5530	5020	4360	3970	3460	3150	2740	2800
50m	5,4-27,8 9000	9000	9000	9000	9000	9000	8610	7430	6770	6190	5750	5190	4850	4480	4200		
	5,4-16,5 18000	17130	14890	12280	10910	9230	8300	7140	6480	5910	5480	4940	4600	4250	4010		
45m	5,4-29,0 9000	9000	9000	9000	9000	9000	8880	7710	7040	6470	5960	5290	4900				
	5,4-16,6 18000	17420	15180	12580	11200	9520	8600	7440	6780	6220	5720	5070	4700				
40m	5,4-30,0 9000	9000	9000	9000	9000	9000	9000	8090	7430	6720	6230						
	5,4-17,3 18000	17820	15570	12970	11600	9930	9010	7850	7190	6500	6030						
35m	5,4-30,8 9000	9000	9000	9000	9000	9000	9000	8350	7700								
	5,4-17,4 18000	18000	15840	13240	11870	10290	9290	8140	7510								
30m	5,4-30,0 9000	9000	9000	9000	9000	9000	9000										
	5,4-17,7 18000	18000	16240	13650	12280	10620	9730										

## Tower height

Number of tower section	290HC Reinforced Tower Section(2,3X2,3X4,14m)	
	Jib length	
	30 / 35m	40 / 45 / 50 / 55m
0	12,7 (RS)	12,7 (RS)
1	16,8 (S)	16,8 (S)
2	21,0 (S)	21,0 (S)
3	25,1 (S)	25,1 (S)
4	29,3 (S)	29,3 (S)
5	33,4 (S)	33,4 (S)
6	37,5 (S)	37,5 (S)
7	41,7 (S)	41,7 (S)
8	45,8 (S)	-

## Driving unit speed

Hoist gear	Gear	kg	m/min	Luffing	Slewing
 65 kW Elmag, WSB	1	9000	1,4/27,1	 65 kW, WSB 15°~ 87° / 2,2min	 2 X 6.3 kW 0,63 sl./min
	2	5000	3,2/62,7		
	3	2100	6,7/128,8		
	1	18000	2,8/13,5		
	2	10000	6,4/31,4		
	3	4200	13,4/64,4		